

# AGM-156A0-H2-C

**15.6 Inch, 1920xRGBx1080, 16.7M Colors,  
IPS screen, Capacitive touch**



## ● Display

Item	Parameter	Description
Color	16.7M (16777216) colors	24 bit color 8R8G8B
Panel Type	IPS	High contrast,good color reproduction,wide viewing angle(typical value is 85/85/85/85)
Viewing Angle	85/85/85/85(L/R/U/D)	-
Active Area (A.A.)	343.16mm(W) *192.6mm(H)	1920*1080
View Area (V.A.)	342.16mm(W) *191.59mm(H)	1920*1080
Resolution	1920*1080	Support 0°/90°/180°/270°rotated display
Backlight	LED	≥20000H (Continuous working with maximum brightness, time of the brightness decays to 50%)
Brightness	250nit	100 levels adjustment.(It's not recommended to set brightness to 1%~30% of the maximum,which may lead LCD flicker)
Note: You can use dynamic screen saver wallpapers to avoid afterimages caused by fixed page display for a long time.		

## ● Voltage & Current

Item	Conditions	Min	Typ	Max	Unit
Power Voltage	-	12	12	36	V
Current parameters	-	-	420	-	mA
Recommended power supply: 12V 1A DC					

## ● Reliability Test

Item	Conditions	Min	Typ	Max	Unit
Working Temperature	60%RH at 12V voltage	0	25	50	°C
Storage Temperature	-	-20	25	60	°C
Working Humidity	25°C	10%	60%	90%	RH

## ● EFT Immunity Requirements

Environmental Phenomenon	Port	Test Specification	Basic standard	Performance criterion
Electrical fast transients	Input a.c. power port	±2KV(peak) Tr/Th:5/50ns Repetition frequency:5kHz or 100kHz	IEC 61000-4-4	B

## ● ESD Immunity Requirements

Environmental Phenomenon	Port	Test Specification	Basic standard	Performance criterion
Electrostatic discharge	Enclosure port	+4kV(Contact Discharge)	IEC 61000-4-2	B
		+8kV(Air Discharge)	IEC 61000-4-2	B

- **Interface**

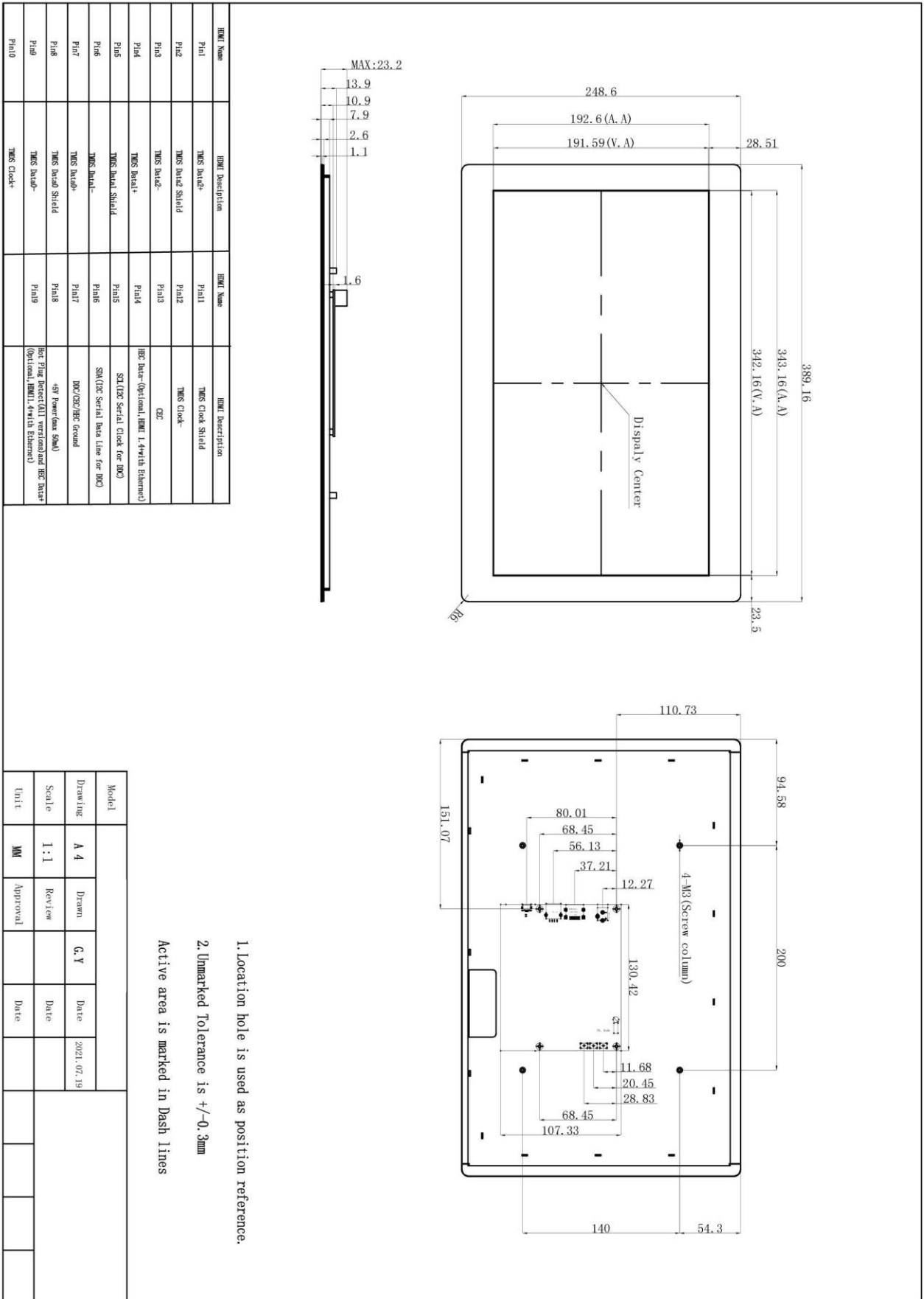
Item	Description
Socket	12-36V Power interface, HDMI interface
USB Interface	Yes
SD Card Slot	None

- **Peripheral**

Peripheral	Capacitive touch panel
------------	------------------------

- **Packing Capacity & Dimension**

Dimension				
Dimension	389.16(W)×248.6(H)×23.2(T)mm			
Net Weight	1660g			
Packing Capacity				
Model	Size	Layer	Quantity/Layer	Quantity(Pcs)
Carton1:	525mm(L)×330mm(W)×80mm(H)	1	1	1
Carton2:	570mm(L)×340mm(W)×385mm(H)	1	5	5



**Revision records**

<b>Rev</b>	<b>Revise Date</b>	<b>Content</b>	<b>Editor</b>
00	2022-12-21	First Edition	Kaya
01	2024-03-28	Add ESD/EFT parameters	YML
02	2025-05-09	Modify the physical product image	Chen