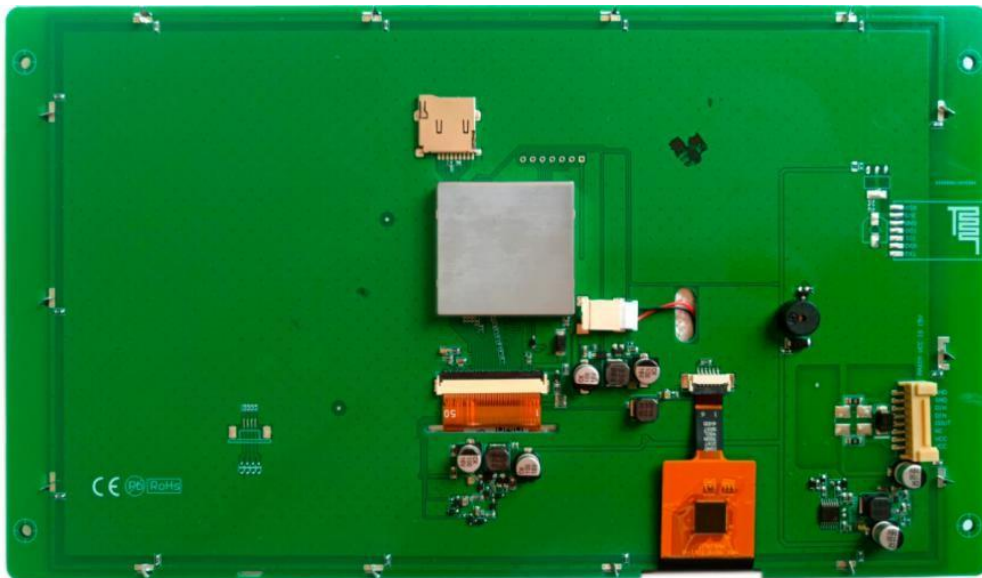


AGM-101A0-I1-C

Based on T5L ASIC 10.1 Inches, 1024xRGBx600, 16.7M Colors, IPS screen、
CTP、 Standard instruction set (TA) / DGUS II system、 Cost-Effective screen



Record of Revision

Revise Date	Content
2019-03-22	First Edition
2019-08-22	Modify Interface



● Display

Item	Parameter	Description
Color (A.A)	16.7M (16777216) colors 222.7 mm (W) x 125.3 mm (H)	24 bit color 8R8G8B 1024x600
Resolution	1024x600	Support 0° /90° /180° /270° rotated display
Backlight	LED	≥ 10000H (Continuous working with maximum brightness, time of brightness halves)
Brightness	250nit	TA system:64 levels adjustment; DGUS II system:100 levels adjustmen (It's not recommend to set brightness to 1%~30% of the maximum,which may lead a flicker)
Note: Displaying of high-contrast still images for more than 30 minutes may result in residual images. Please add screen saver to avoid this problem.		

● Voltage & Current

Item	Conditions	Min	Typ	Max	Unit
Power Voltage	-	6.0	12.0	15.0	V
Operation Current	VCC = +12V, Backlight on	-	250	-	mA
	VCC = +12V, Backlight off	-	70	-	mA
Recommended power supply: 12V 1A DC					

● Reliability Test

Item	Conditions	Min	Typ	Max	Unit
Working Temperature	60%RH at 12V voltage	-20	25	70	°C
Storage Temperature	-	-30	25	85	°C
Working Humidity	25°C	10%	60%	90%	RH
Protective Paint	-	-	None	-	-

● Interface

Item	Conditions	Min	Typ	Max	Unit
Baudrate	User Set	3150	115200	3225600	bps
Output Voltage (TXD)	Output 1, Iout = -4mA	2.7	3.2	-	V
	Output 0, Iout = 4mA	-	0.1	0.4	V
Input Voltage (RXD)	Input 1	2.4	3.3	5.5	V
	Input 0	0	-	1.0	V
Interface	Mode is determined by Jumper: ON = 8N1, 3.3V & 5V TTL/CMOS; OFF = 8N1, RS232				
Socket	8Pin_2.0mm Lock Socket				
USB	None				
SD Slot	YES (SDHC/FAT32 Format)				



● **Memory**

Item	Typical value	Features	Typ value	Unit	Description
FLASH (TA/DGUS)	16Mbytes	Space of Font	4-12	Mbytes	A single font of 256 Kbytes, store font, icon libraries, and other binary files
		Picture Storage (.ICL file)	12-4	Mbytes	JPEG format(Picture quantity relate to JPEG size, size of a single JPEG image file should not exceed 768 Kbytes)
RAM (DGUS II)	128Kbytes	Variable Storage Space	/	/	Data is not saved when power down
Nor Flash (DGUS II)	320Kbytes	User database	/	/	Data is saved when power down

● **UI & Peripheral**

UI & Peripheral	
UI Version	TA / DGUS II (DGUS II pre-installed)
Peripheral	Capacitance touch screen, Buzzer

● **Packing Capacity & Dimension**

Dimension				
Dimension	257.8(W) ×148.1(H) × 15.2(T) mm			
Net Weight	545g			
Packing Capacity				
Model	Size	Layer	Quantity/Layer	Quantity(Pcs)
Carton1:	220mm(L)×160mm(W)×47mm (H)	-	-	-
Carton2:	250mm(L)×200mm(W)×80mm (H)	2	1	2
Carton3:	320mm(L)×270mm(W)×80mm (H)	-	-	-
Carton4:	450mm(L)×350mm(W)×300mm(H)	1	10	10
Carton5:	600mm(L)×450mm(W)×300mm(H)	-	-	-

Remark: here is no extra-notice if the product design changes that do not affect performance parameters and use.

